



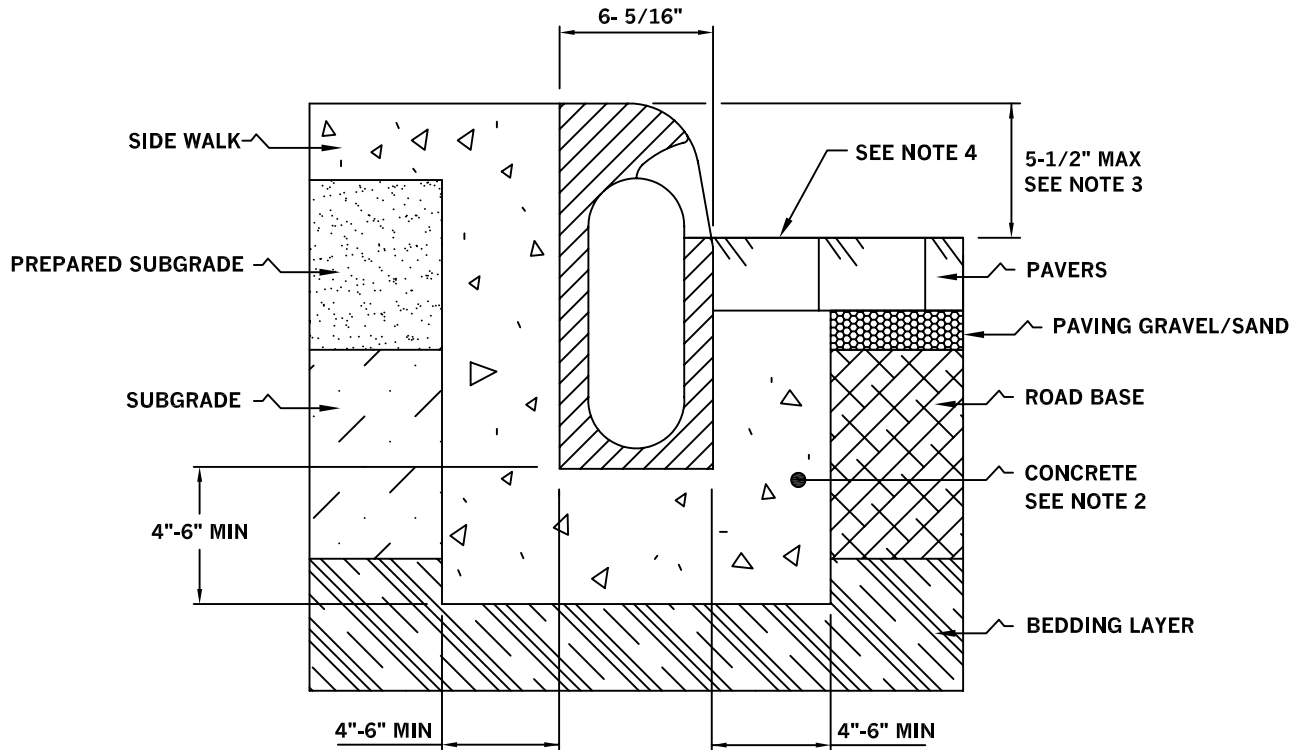
INSTALLATION DRAWING

ACO Polymer Products Inc.
 P.O. Box 245
 Chardon, OH 44024
 PH: 440-285-7000
 FX: 440-285-8517
 e-mail: sales@acousa.com

DRWG# 1810 Date: 3.17.07

Curbdrain: Load Class A-C : Pavers & Sidewalk

WWW.ACOUSA.COM



NOTES:

1. It is necessary to ensure the minimum dimensions shown are suitable for the existing ground conditions. *Engineering advice may be required.*
2. A minimum concrete strength of 3000 PSI is recommended. The concrete should be vibrated to eliminate air pockets.
3. The finished level of the concrete must be approx. 1/8" above the top of the Curbdrain inlet.
4. The paver course adjacent to the curb edge must be fully bonded to the concrete surround.
5. Refer to ACO'S latest installation instructions for complete details.



SPECIFICATION CLAUSE

ACO Polymer Products Inc.
 P.O. Box 245
 Chardon, OH 44024
 PH: 440-285-7000
 FX: 440-285-8517
 e-mail: sales@acousa.com

DRWG# 1810 Date: 3.17.07

Curbdrain: Load Class A-C : Pavers & Sidewalk

WWW.ACOUSA.COM

General

The surface drainage system shall be ACO ROAD CurbDrain as manufactured by ACO Polymer Products, Inc. or equal approved.

Materials

The curb drainage system bodies shall be manufactured from polyester polymer concrete with minimum properties as follows:

- Compressive strength: 14,000 psi
- Flexural strength: 4,000 psi
- Water absorption 0.07%
- Frost proof
- Salt proof - B117 Salt Spray Test compliant
- Dilute acid and alkali resistant

The nominal clear opening shall be 3.95" (100mm) with overall width of 6.3" (160mm). Pre-cast units shall be manufactured with neutral invert and have a minimum wall thickness of at least 0.67" (16mm). Each unit will feature a full radius in the trench bottom and a male to female interconnecting end profile. A sealant groove provides a 1/4" recess to allow a bead of sealant to be inserted at joints if required. Units shall have cast in anchoring features on the outside wall to ensure maximum mechanical bond to the surrounding bedding material and pavement surface. Each standard unit shall provide 2 front inlets each providing 8.71 sq. ins. open area.

Installation

The surface drain system shall be installed in accordance with the manufacturer's installation instructions and drawings.